

## BMAL1 (Acetyl Lys538) Polyclonal Antibody

### Description

|                         |  |
|-------------------------|--|
| Product type            | Primary Antibody   |
| Code                    | POLY-AP00913   |
| Host                    | Rabbit   |
| Isotype                 | IgG  |
| Size                    | 20ul, 50ul, 100ul  |
| Immunogen               | The antiserum was produced against synthesized Acetyl-peptide derived from human BMAL1 around the Acetylation site of Lys538. AA range:501-550   |
| Mol wt                  | 68762  |
| Species reactivity      | Human, Mouse, Rat  |
| Clonality               | Polyclonal   |
| Recommended application | WB, ELISA, TR-FLISA, TR-FRET   |
| Concentration           | 1 mg/ml  |
| Full name               | BMAL1 (Acetyl Lys538) Antibody   |
| Synonyms                | ARNTL; BHLHE5; BMAL1; MOP3; PASD3; Aryl hydrocarbon receptor nuclear translocator-like protein 1; Basic-helix-loop-helix-PAS protein MOP3Brain and muscle ARNT-like 1; Class E basic helix-loop-helix pr |

This product is for research use only, not for use in human, therapeutic or diagnostic procedure.

### Background

The protein encoded by ARNTL is a basic helix-loop-helix protein that forms a heterodimer with CLOCK. This heterodimer binds E-box enhancer elements upstream of Period (PER1, PER2, PER3) and Cryptochrome (CRY1, CRY2) genes and activates transcription of these genes. PER and CRY proteins heterodimerize and repress their own transcription by interacting in a feedback loop with CLOCK/ARNTL complexes. Defects in ARNTL have been linked to infertility, problems with gluconeogenesis and lipogenesis, and altered sleep patterns. Several transcript variants encoding different isoforms have been found for ARNTL.

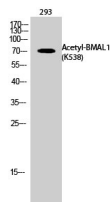
### Recommended Dilution

WB: 1: 500 - 1: 2000

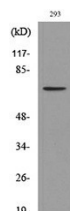
ELISA: 1: 20000

Not yet tested in other applications.

### Images



Western Blot analysis of 293 cells using Acetyl-BMAL1 (K538) Polyclonal Antibody. Secondary antibody was diluted at 1:20000



Western blot analysis of lysate from 293 cells, using BMAL1 (Acetyl-Lys538) Antibody.

Storage

-20°C for one year

Poly-Dtech, 204 Avenue de Colmar, Strasbourg, France

[contact@poly-dtech.com](mailto:contact@poly-dtech.com) | [www.poly-dtech.com](http://www.poly-dtech.com)